



O.P.No. 005  
September, 2015

### Analysis of Finance Commissions Transfers to Odisha: From GSDP Perspective

The present study investigates the trend analysis of Finance Commissions transfers with respect to Gross State Domestic Product (GSDP) of Odisha. The

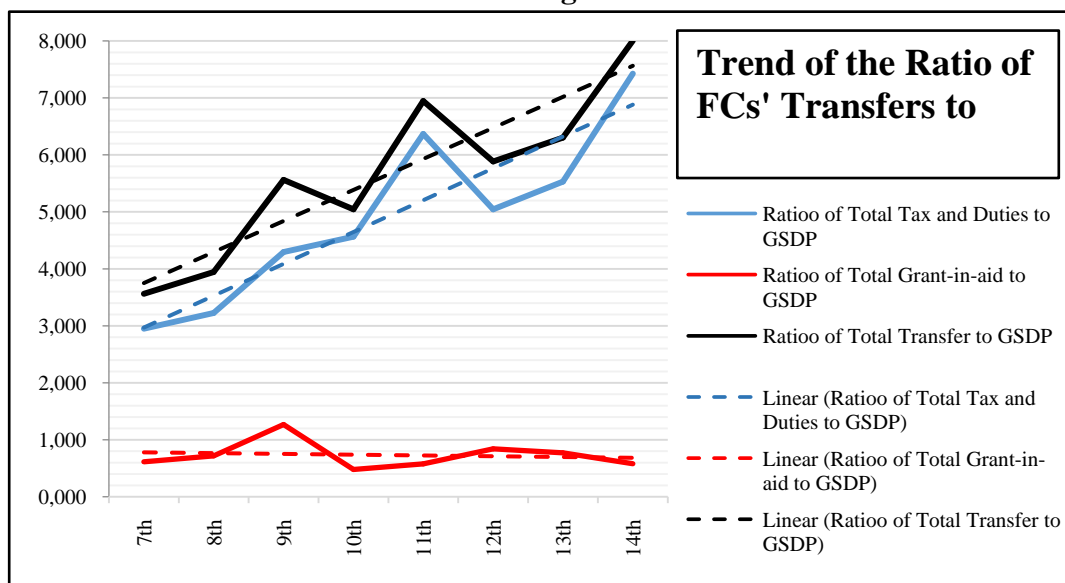
details of the analysis are presented in Table-1 along with Figure-1.

**Table-1**

Finance Commissions of India and their Recommendation to Odisha (in Ratio to GSDP)				
Finance Commission (FC)	Recommendation Period	Ratio of Total Tax and Duties Transfer to GSDP of Odisha	Ratio of Total Grant-in-aid Transfer to GSDP of Odisha	Ratio of Total Transfer to GSDP of Odisha
1	2	3	4	5
Seventh	1979-84	2.950	0.612	3.562
Eighth	1984-89	3.225	0.719	3.943
Ninth	1990-95	4.294	1.268	5.562
Tenth	1995-2000	4.566	0.480	5.046
Eleventh	2000-05	6.369	0.578	6.947
Twelfth	2005-10	5.046	0.840	5.886
Thirteenth	2010-15	5.531	0.771	6.302
Fourteenth	2015-20	7.426	0.579	8.004

Sources: Reports of Finance Commission of India and Compiled by Author

**Figure-1**



Sources: Reports of Finance Commission of India; Economic Survey of Odisha 2014-15 and drawn by Author

**Findings:**

1. The 'ratio of taxes and duties relative to GSDP of Odisha' trends upward since 12<sup>th</sup> FC along with 'ratio of total transfer to GSDP of Odisha'.

2. However, 'ratio of grants-in-aid to GSDP of Odisha' is declining since 12<sup>th</sup> FC.